



Asia Education Foundation



Building Relationships through Intercultural Dialogue and Growing Engagement (BRIDGE)

The future prosperity of Australia relies on our ability to better connect and meaningfully engage with our region at all levels of society, particularly in education.

The Australia-Asia BRIDGE School Partnerships Project connects Australian teachers, students and school communities with their counterparts across the Asia region.

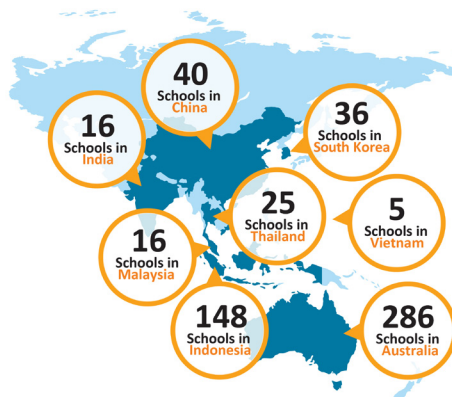
This teacher professional learning program builds educators' Asia capability through school partnerships to:

- develop their knowledge and understanding of the diverse cultures of Asia;
- improve language learning skills (where appropriate);
- enhance information communication technology (ICT) skills; and
- establish sustainable school partnerships and a community of learners.

The key to BRIDGE school partnerships is the opportunities provided for teachers and students to learn about each others' country and culture, and collaborate on topics of mutual interest.

This helps students understand Australia's place in the world and develop intercultural understanding.

In the last year, the Australia-Asia BRIDGE School Partnership Project has grown to involve more than 600 schools, edging closer to the Asia Education Foundation's aim to partner 2,000 schools across Asia.



To learn more about BRIDGE programs visit:

www.asiaeducation.edu.au/BRIDGE

or contact BRIDGE Program Manager Aaron O'Shannessy on a.shannessy@asialink.unimelb.edu.au